



ALLE
PROCESSING

2022
PRODUCT
GUIDE ESTD 1946





INDEX

| INSTITUTIONAL / HOSPITAL MEALS

FROZEN DINNERS	4-7
SOUPS / DESSERTS	8
PUREES / BREAKFAST PRODUCTS	8-9
SHELF STABLE MEALS	10

| CORRECTIONAL MEALS

SHELF STABLE MEALS	12
FROZEN MEALS	13

| FOOD SERVICE

BEEF & POULTRY PRODUCTS / SOUP / KISHKE / CABBAGE	15-18
PARVE ITEMS & FISH	19
SALADS / PUREES	20
PLATTERED	22-23
BULK KUGELS	24
BULK DELI	27-29
HOT DOGS	30

| RETAIL PRODUCTS

MON CUISINE	31-34
POT PIES	35
HORS D'OEUVRES / KUGELS / YAPHCIK	36
FAMILY PACKS	38-39
FROZEN BAGS	40-41
SPECIALTIES	42-44
AMAZING MEALS	45-48
CLUB PACKS	49-51
SLICED DELI	54-56
FRANKS & SAUSAGES	58-59
FROZEN RAW BEEF & POULTRY	60-61

| CASE READY

TRAY PACK 12 / 6 PER CASE	62-67
ROLL STOCK / GRASS FED	68-71
CRYOVAC	72-73

INSTITUTIONAL AND HOSPITAL MEALS

REGULAR FROZEN MEALS



Boneless Roast Chicken
with Gravy, Carrot Tzimmes & Rice Pilaf

6 per case / 13 oz ea.

MMRCGC



0 51328 10914 2



Boiled Chicken Bottom in the Pot
with Matzo Balls, Garden Vegetables

6 per case / 13 oz ea.

MMBCGC



0 51328 10915 9



Salisbury Steak
with Gravy, Whipped Potatoes & Seasoned Carrots

6 per case / 13 oz ea.

MMSSGC



0 51328 10911 1



Roast Turkey
with Gravy, Sweet Potato & String Beans

6 per case / 13 oz ea.

MMRTGC



0 51328 10916 6



Spaghetti & Meat Balls
in Tomato Sauce with Green Beans

6 per case / 13 oz ea.

MMSPMGC



0 51328 10912 8



Pot Roast of Beef
with Gravy, Potato Kugel, & Vegetable Medley

6 per case / 13 oz ea.

MMPRGC



0 51328 10905 0



Filet Of Sole
with Lemon Parsley Sauce, Shell Pasta & Green Beans

6 per case / 12 oz ea.

MMFSG



0 51328 10918 0



Broiled Salmon
with Orzo & Vegetables

6 per case / 16 oz ea.

MONFSGH



0 51328 71377 6



Boiled Beef

with Parsley, Potato,
& Sliced Zucchini

6 per case / 12 oz ea.

MMBBD



0 51328 20906 4



Filet of Tilapia

with Quinoa & Mixed Vegetables

6 per case / 16 oz ea.

MONFTGH



0 51328 71376 9



Filet Of Sole (Diet)

With Lemon Parsley Sauce,
Shell Pasta & Green Beans

6 per case / 12 oz ea.

MMFSD



0 51328 20917 0



Brisket Of Beef

with Roast Potatoes, Peas & Carrots

6 per case / 12 oz ea.

MMBRD



0 51328 20919 4



Meat Loaf

with Broccoli
& Diced Potatoes

6 per case / 12 oz ea.

MMMLD



0 51328 70077 6

DIET DINNERS - NO SALT ADDED



Roast Chicken Breast Bone In

with Tzimmes & Potato Kugel

6 per case / 12 oz ea.

MMRCDS



Pot Roast Of Beef

with Gravy, Roast Potatoes & Mixed Vegetables

6 per case / 12 oz ea.

MMPRD



Roast Chicken Bottom

with Gravy, Rice, Peas & Carrots

6 per case / 12 oz ea.

MMRCD



Braised Veal

in Mushroom Gravy with Mashed Potatoes & Sliced Carrots

6 per case / 12 oz ea.

MMBVD



Boiled Chicken Bottom in the Pot

with Matzo Balls & Garden Vegetables

6 per case / 12 oz ea.

MMBCD



Salisbury Steak

with Mashed Potatoes & Crinkled Carrots

6 per case / 12 oz ea.

MMSSD



Roast Turkey

with Gravy, Mashed Sweet Potatoes, & Vegetable Medley

6 per case / 12 oz ea.

MMRTD



Beef Goulash

with Mashed Sweet Potato & Vegetable Medley

6 per case / 12 oz ea.

MMBGD



VEGETARIAN DINNERS

- NO SALT ADDED



Stuffed Cabbage

with Tomato Sauce, Pasta,
Green Beans & Red Peppers

6 per case / 12 oz ea.

MMVSCD



Spaghetti

with Sauce, Sliced Carrots,
& Green Beans

6 per case / 12 oz ea.

MMVSPGD



Eggplant Creole

with Tomato Sauce, Rice,
Green Beans & Red Peppers

6 per case / 12 oz ea.

MMECD



Breaded Vegetable Cutlet

with Mushroom Sauce, Rice,
Peas & Sliced Carrots

6 per case / 12 oz ea.

MMVCD



Stuffed Peppers

in Tomato Sauce with Bow Tie Pasta
& Peas

6 per case / 12 oz ea.

MMVSPD



DAIRY DINNERS

CHOLOV YISROEL



Manicotti

with Broccoli & Green Beans

6 per case / 14 oz ea.

MMMMANIC



Baked Ziti

with Broad Green Beans

6 per case / 14 oz ea.

MMZITI



Cheese Lasagna

with Peas & Mushrooms

6 per case / 13 oz ea.

MMLASAGNA



Stuffed Shells

with Peas & Mushrooms

6 per case / 14 oz ea.

MMSHELLS



SOUPS

- MICROWAVABLE ONLY



Chicken Broth
No Salt

12 per case / 8 oz ea.

MMCKBRDMW



Chicken Broth No Salt
with Matzo Balls

12 per case / 8 oz ea.

MMCKBRMBDMW



0 51328 70174 2



Parve Vegetable Soup
No Salt

12 per case / 8 oz ea.

05-VESDMW



0 51328 70176 6

DIET PUREES



Puree of Chicken
with Rice & Green Beans

- No Salt Added

6 per case / 12 oz ea.

MMPCD



0 51328 20920 0



Puree of Beef
with Rice & Peas

6 per case / 12 oz ea.

MMPBD



0 51328 20921 7



Puree Of Fish

with Savory Mashed Potato &
Pureed Carrots

6 per case / 12 oz ea.

MMPFD



0 51328 71352 3

BREAKFAST PRODUCTS

- PARVE

- CHOLOV YISROEL DAIRY



Mushroom Omelette

12 per case / 5 oz ea.

MCL16



0 51328 11451 1



Spanish Omelette

12 per case / 6.5 oz ea.

MCL15



0 51328 12803 7



Cheese Blintzes

Cholov Yisroel

2 per dish / 5 oz ea. / 3.75 lb case / 6 dish per case

O5-DCB



0 51328 70181 0



Plain Omelette

No Salt Added

12 per case / 5.5 oz ea.

ALOMMMPO



0 51328 12801 3



French Toast

12 per case / 3 oz ea.

ALMMFT



0 51328 12802 0



Cheese Omelet

Cholov Yisroel

12 per case / 9 oz ea.

MMD COP



0 51328 70182 7



Scrambled Eggs

12 per case / 3 oz ea.

O5-SE



0 51328 71221 2



Pancakes with Syrup

12 per case / 4 oz ea.

O5-HPSF



0 51328 70180 3



INSTITUTIONAL AND HOSPITAL MEALS

SHELF STABLE DINNERS



Beef Goulash

12 per case / 12 oz ea.

O5-MM#3



0 51328 99821 0



Vegetarian Stuffed Cabbage

12 per case / 12 oz ea.

O5-MM#1



0 51328 99819 7



Spaghetti & Meatballs

12 per case / 12 oz ea.

O5-MM#4



0 51328 99822 7



**Chicken Primavera
with Pasta**

12 per case / 12 oz ea.

O5-MM#5



0 51328 99823 4



**Turkey Mashed
Potato**

12 per case / 12 oz ea.

O5-MM#6



0 51328 99824 1



**Cheese Ravioli
(Parve)**

12 per case / 12 oz ea.

O5-MM#7



0 51328 99825 8



**Beef Stuffed Cabbage
with Tomato Sauce**

12 per case / 12 oz ea.

O5-MM#8



0 51328 99826 5



**Roasted Chicken
with Rice Vegetables**

12 per case / 12 oz ea.

O5-MM#9



0 51328 99827 2



**Roasted Chicken
with Diced Potatoes**

12 per case / 12 oz ea.

O5-MM#10



0 51328 99828 9



**Vegetarian Salisbury
Steak**

12 per case / 12 oz ea.

O5-MM#11



0 51328 99829 6



**Vegetarian Stuffed
Shells**

12 per case / 12 oz ea.

O5-MM#12



0 51328 99830 2

Meal Mart

The brand you trust.



Good right off the skillet.™

6 FLAVORS OF GOOD, GOOD, GOOD, GOOD.
100% PREMIUM
BEEF
SAUSAGES



CORRECTIONAL MEALS

SHELF STABLE

Chicken Patty Meal

12 per case / 16 oz ea

RSCHCP102



Chicken Chow Mein

12 per case / 20 oz ea

RSCHCCM105



Spaghetti & Meatballs

12 per case / 20 oz ea

RSCHSM108



Vegan Chili Dinner

12 per case / 19 oz ea

RSCHVCD113



Scrambled Spanish Omelet

with Potato

12 per case / 12 oz ea

RSCHSSO116



Fish Fillet

12 per case / 14 oz ea

RSCHFF100



Chicken Wing Meal

12 per case / 18 oz ea

RSCHCW103



Beef Meatloaf

12 per case / 16 oz ea

RSCHMM106



Roast Turkey

12 per case / 16 oz ea

RSCHRT111



Vegan Chicken Cutlet

with Potato

12 per case / 13 oz ea

RSCHVCC114



Chicken Bologna

40 per case / 4 oz ea

RSCHCB117



Beans & Franks

12 per case / 18 oz ea

RSCHBF101



Chicken Cacciatore

12 per case / 20 oz ea

RSCHCC104



Beef Salisbury Steak

12 per case / 16 oz ea

RSCHSS107



Vegan Stuffed Cabbage

12 per case / 16 oz ea

RSCHVSC112



Cheese Scrambled Eggs

with Potato

12 per case / 12 oz ea

RSCHCO115



FROZEN

Fish Fillet

12 per case / 14 oz ea

SCHFF100N



Beans & Franks

12 per case / 18 oz ea

SCHBF101



Chicken Patty Meal

12 per case / 16 oz ea

SCHCP102



Chicken Wing Meal

12 per case / 18 oz ea

SCHCW103



Chicken Cacciatore

12 per case / 20 oz ea

SCHCC104



Chicken Chow Mein

12 per case / 20 oz ea

SCHCCM105



Beef Meatloaf

12 per case / 16 oz ea

SCHMM106



Beef Salisbury Steak

12 per case / 16 oz ea

SCHSS107



Spaghetti & Meatballs

12 per case / 20 oz ea

SCHSM108



Spanish Omelet

12 per case / 7 oz ea

SCHSO110



Roast Turkey

12 per case / 16 oz ea

SCHRT111



Vegan Stuffed Cabbage

12 per case / 16 oz ea

SCHVSC112



Vegan Chili Dinner

12 per case / 19 oz ea

SCHVCD113



Vegan Chicken Cutlet

with Potato

12 per case / 13 oz ea

SCHVCC114



Pot Roast Gourmet

12 per case / 16 oz ea

SCHPRG63N



Meal Mart

The brand you trust.

**YOUR HUSBAND
"FORGOT"
TO TAKE THE
ROAST OUT
OF THE OVEN**

Just wing it!



BEEF PRODUCTS



Stuffed Peppers
with Beef In Sauce In Box
4 trays per case / 6 lbs per tray / 24 lb case / 8 oz pc / 12 pcs per tray
05-BPSPS



Beef Meatballs
I.Q.F.
10 lb case
05-MB10



Breaded Turkey Veal Patties
Approx. 30 pcs / 9 lb
03-FTVP



Cocktail Egg Rolls
Approx. 170 pcs / 10 lb
05-ERL10



Beef Kreplach
6/2 lb bag / 12 lb
05-BPKRE



Beef Sliders (Mini Burgers)
Approx. 94 pcs / 1.7 oz each / 10 lb
91-BEEFS



Beef Goulash
(Cooked)
2/10 lb casing / 20 lb case
71-CBG



Raw Salisbury Steak
Approx. 40 pcs / 10 lb case
51-RSS



Pastrami Egg Rolls
30/5 oz / 9 lb
05-PERL



Cocktail Beef Franks
in French Dough
Approx. 288 pcs / 9 lb
08-FKS9



Beef Pot Pie
Approx. 18 pcs / 10 lb
05-BPPFS



Traditional Mix Meatloaf (Raw)
8 loaves / approx. 24 lb case
71-MTM



Mini Pastrami Bites

Approx. 200 pcs / .8 oz ea.
/ 10 lb case

05-PKZ



Mini Pastrami Bites

Approx. 64 pcs / 2.5 oz ea.
/ 10 lb case

05-PKZ2.5



BBQ Beef Cigars

Approx. 130 pcs per case
/ 10 lb case

05-BBQBC1



BBQ Beef Cigars

Approx. 75 pcs per case
/ 10 lb case

05-BBQBC2

KISHKE



Kishke (Derma)

Approx. 4 lb / 32 lb case

71-KISBY1



0 51328 99991 0



Parve Kishke

Approx. 4 lb / 32 lb case

71-PKB



0 51328 70458 3

SOUP



Chicken Broth

4/5 lb containers / 20 lb

05-CKSB



0 51328 50301 8

STUFFED CABBAGE



Beef Stuffed Cabbage

with sauce in box

4 trays per case / 6 lbs per tray
/ 24 lb case / 8 oz pc / 12 pcs per tray

05-BPSCS



0 51328 50110 6



Beef Stuffed Cabbage

with sauce in box

27 pcs per tray / 3 trays = 81 pcs
/ 18 lb case = 4 oz ea. cabbage

03-CABB



0 51328 50111 3



**Stuffed Cabbage
Raw Mini - No Sauce**

Approx. 50 pcs per tray / 3 trays
/ 12 lb case = 1 - 1.5 oz ea. cabbage

03-MCSCB



0 51328 50112 0



**Stuffed Cabbage
Raw - No Sauce**

Approx. 75 - 80 pcs bag
/ 30 lb case = 6 oz ea. cabbage

03-MSCB



0 51328 50113 7

POULTRY PRODUCTS



Sesame Chicken Tender

10 lb case

03-CTSB



0 51328 70115 5



Breaded Chicken & Turkey Cutlet

Approx. 50 pcs / 12.5 lb

03-CTCUT



0 51328 70153 7



Chicken Pot Pie

Approx. 18 pcs / 10 lb

05-CPPFS



0 51328 70324 1



Turkey Meatballs

1 oz ea./approx. 160 pcs per case / 10 lb case

05-TM10



0 51328 70651 8



Breaded Chicken
(Summer Camp)

10 lb case

05-SCHWN



0 51328 70660 0



Breaded Chicken Breast Cutlets

Approx. 45 to 48 pcs / 10 lb case

03-BCBCC



0 51328 70676 1



Breaded Chicken & Turkey Nuggets

1 oz ea. / approx. 160 pcs per case / 10 lb case

03-CTNUG



0 51328 70741 6



Chicken Tender

2.5 oz ea. / approx. 64 pcs per case / 10 lb case

03-CTB



0 51328 70755 3



Summer Chicken Cutlet

Approx. 3.5 oz pcs / 50 pcs per case / 11.5 lb case

71-SCHWC



0 51328 70506 1



Breaded Chicken Breast Cuts

1 oz ea./approx. 160 pcs per case / 10 lb case

03-BCBC



0 51328 99987 3



Breaded Breast & Wings

Approx. 30 pcs / 15 lb

03-FBCBQ



Breaded Thigh & Drum

Approx. 30 pcs / 15 lb

03-FBCLQ



Grilled Chicken Cutlets

Approx. 50 pc / 13.5 lb case

71-GHC



Stuffed Chicken Breast
with Rice & Mushrooms

6 pcs per tray / 6 trays /
23 lb case

05-MSCRM



Chicken Kreplach

Approx. 120 pcs / 2/6 lb
bag / 12 lb case

08-KRE



Seasoned Chicken Sliders
(Mini Chicken Patties)

10 lb case

05-SMCP

LIVERS



Broiled Beef Livers

Approx. 10 lb case

71-BLBBF



Chopped Liver Meal
Mart Brand (Pastuerized)

4/4.5 lb containers / 18 lb

02-ACL



Chopped Liver Schreiber
Brand (Pastuerized)

4/4.5 lb containers / 18 lb

02-SCHCL



Broiled Chicken
Livers (Fully Cooked)

10 lb case

05-BCL10



MM Chopped
Chicken Livers

4/4.5 lb containers / 18 lb

02-CCL



Sauted Chicken
Livers

5 lb case

02-LVS5

PARVE ITEMS



Shlishkes(Gnocchi)

6/4 lb / 24 lb case

02-ASHS



Potato Latkes

Approx. 48 pcs / 3 oz
ea. / 9 lb case

08-LAT



Potato Puffs

Approx. 288 pcs / 9 lb

08-PPF



Matzoh Balls

20 pcs per bag / 9/4 lb /
36 lb case

05-CMATBS



Falafel Balls

Approx. 160 pcs/1 oz.
ea. / 10 lb case

05-VFB



Egg Rolls (Vegetarian)

Approx. 30 pcs / 5 oz
ea. / 9.4 lb case

05-ERL



Potato Knishes

Approx. 40 pcs / 4 oz
ea. / 10 lb case

05-PKL



Cholent (Parve)

2/6 lb trays / 12 lb case

02-PCHOF



GEFILTE FISH



Raw Gnocchi

Approx. 4 oz pcs / 400 pcs
per case / 10 lb case

05-PCG



Cooked Gefilte Fish

8 per case / 3 lb ea. /
approx. 24 lb case

71-GEFBF



Raw Frozen Gefilte Fish

8 per case / 3 lb ea. /
approx. 24 lb case

71-GEFR



New! Raw Frozen Gefilte Fish

8 per case / 3 lb ea. /
approx. 24 lb case

71-GEFR/AC

PUREES



**Puree of Beef,
Cooked and Seasoned**

50 pcs per case / 3.2 oz
each / 10 lb case

05-SPB



**Puree of Turkey,
Cooked and Seasoned**

50 pcs per case / 3.2 oz
each / 10 lb case

05-SPT



**Puree of Chicken,
Cooked and Seasoned**

50 pcs per case / 3.2 oz
each / 10 lb case

05-SPC



**Puree of Fish,
Seasoned**

50 pcs per case / 3.2 oz
each / 10 lb case

05-SPF



Exactly how hungry are you?

NOW AVAILABLE IN A NEW **1LB** PACKAGE



PLATTERED



Hors D'oeuvre Potato Puffs

6/2 lb. / 40 pcs. / .8 oz / 10 pcs per tray / 4 trays per pack / 6 packs per case / 12 lb. case

MONPPFP



Hors D'oeuvre BBQ Beef Cigars

6/1.875 lb / 180 pcs / 1 oz / 15 pcs per tray / 2 trays per pack / 6 packs per master case / 11.25 lb per case

O5-SBBFP



Hors D'oeuvre Mini Egg Rolls

6/2.5 lb / 240 pcs / 1 oz / 10 pcs per tray / 4 trays per pack / 6 packs per master case / 15 lb case

MONERLFP



Hors D'oeuvre Pastrami Sizzle

6/2 lb / 240 pcs / 4 trays per pack / 6 per case / 12 lb. case

O5-PKZFP





Breaded Chicken Drumettes

12 pc per tray / ea. tray 1.5 lb
/ 2 trays in 3 lb pack / 6 packs
in a master case / 18 lb case

05-FCD



Hors D'oeuvre Cocktail Franks

6/2.5 lb / 240 pcs / 1 oz / 10 pcs per
tray / 4 trays per pack / 6 packs per
master case / 15 lb case

MONCFFP





BULK KUGELS - SOUFFLES



Potato Kugel

2/4 lb trays / 8 lb

01-PKPFS



Sweet Potato Kugel

2/4 lb trays / 8 lb

01-SPSFS



Yapchik

2/6 lb trays / 12 lb case

01-PKPY



Noodle (Sweet) Kugel

2/4 lb trays / 8 lb

01-NKPFS



Apple Noodle Kugel

2/4 lb trays / 8 lb

01-AKPFS



Broccoli Kugel

2/4 lb trays / 8 lb

01-BKPFS



Noodle (Salty) Kugel

2/4 lb trays / 8 lb

01-NSPF



Jerusalem Noodle Kugel

2/4 lb trays / 8 lb

01-YKPF



HAVE YOUR YAPCHIK, & FINISH IT TOO.

Perfectly sized

for those quieter Shabbosim, this smaller yapchik is made exactly like our bigger one.

It has the same great flavor and will easily feed four, although after one bite, they might be left wanting more.

NO
ARTIFICIAL
ANYTHING

20
LBS
33



KIDDUSH JUST GOT REAL. (REAL GOOD).

YAPCHIK

Meal Mart
MEAT YOUR POTATOES

JUST ENOUGH
SOMETIMES
LESS IS MORE

Meal Mart

The brand you trust.

A CLASSIC
ANYWAY
YOU
SLICE IT!





BULK DELI

Long Salami

4 per case / approx. 4 lb ea.
/ approx 16 lb case

41-JSALL



Wide Bologna

2 per case / approx. 5.5 lb ea.
/ 11 lb case

51-MBOLC



Wide Salami

2 per case / approx. 5.5 lb ea.
/ 11 lb case

51-MSALC



SBD Beef Bologna

2 per case / approx. 5.5 lb ea.
/ 11 lb case

51-BYBOLC



SBD Beef Salami

2 per case / approx. 5.5 lb ea.
/ 11 lb case

51-BYSALC



Roast Beef

2 per case / approx. 9 lb ea.
/ approx 18 lb case

71-CPRB



Veal Pastrami

2 per case / approx. 9 lb ea.
/ 18 lb case

71-VP





**SBD Cooked
1st Cut Corned Beef**

3 per case / approx. 6 lb ea.
/ 18 lb case

71-BYCBC1



1st Cut Brisket Pastrami

3 per case / approx. 6 lb ea.
/ 18 lb case

71-TBP



Chuck Lean Pastrami

3 per case / approx. 4 lb ea. /
12 lb case

71-PCH10L



Turkey Pastrami

2 per case / approx. 5 lb ea. /
10 lb case

71-TP10



Shoulder Pastrami

2 per case / approx. 7 lb ea.
/ 14 lb case

71-PSH10



Plate Pastrami

15 per case / approx. 2 lb ea.
/ 30 lb case

71-PASTN



Calachel Pastrami

3 per case / approx. 5 lb ea.
/ 15 lb case

71-PC10



SBD Shoulder Pastrami

2 per case / approx. 7 lb ea.
/ 14 lb case

71-BYPSH10



**Cooked 1st Cut
Corned Beef**

3 per case / approx. 6 lb ea.
/ 18 lb case

71-CBC1



Smoked Beef Fry

3 per case / approx. 7 lb ea.
/ approx. 22 lb case

71-BFR



Oven Roasted Turkey Breast
 3 per case / approx. 6 lb ea.
 / 18 lb case
 71-CRTB



Cooked Turkey Breast
 3 per case / approx. 6 lb ea.
 / 18 lb case
 71-CTB1



Old Fashioned Smoked Turkey Breast
 3 per case / approx. 6 lb ea.
 / 18 lb case
 71-SBTOF



Smoked Turkey Breast
 3 per case / approx. 6 lb ea.
 / 18 lb case
 71-SBT1



Wide Turkey Roll
 2 per case / approx. 10 lb ea.
 / 20 lb case
 51-MTRO10



Classic Turkey Breast
 3 per case / approx. 6 lb ea.
 / 18 lb case
 71-CTB200



Premium **Hod Taim** *Turkey*



Honey Smoked Turkey Breast
 3 per case / approx. 6 lb ea.
 / 18 lb case
 71-GHSTB



Gourmet Smoked Turkey Breast
 3 per case / approx. 6 lb ea.
 / 18 lb case
 71-GSTB



Mexican Smoked Turkey Breast
 3 per case / approx. 6 lb ea.
 / 18 lb case
 71-GMSTB



Romanian Turkey Pastrami
 3 per case / approx. 5.5 lb ea.
 / 16.5 lb case
 71-RTP





Beef Franks
5 franks per lb.
(25 per pack)

Approx. 50 pcs per case
/ 2.5 lb / 10 lb case

70-FB4



Beef Franks
8 franks per lb.
(40 per pack)

Approx. 80 pcs per case
/ 2.5 lb / 10 lb case.

70-FB8



Beef Franks
10 franks per lb.
(50 per pack)

Approx. 100 pcs per case
/ 2.5 lb / 10 lb case

70-FB10P



Classic Franks
10 franks per lb.
(50 per pack)

Approx. 100 pcs per case
/ 2.5 lb / 10 lb case

70-MCFB10



**Beth Yosef
Beef Franks**

Approx. 80 pcs per case
/ 2.5 lb / 10 lb case.

70-FB8BY



**Cocktail Franks
(Frozen)**

Approx. 500 pcs per case
/ 2.5 lb / 10 lb case

70-FBC



7" Long Frank
6 franks per lb.
(30 per pack)

Approx. 60 pcs per case
/ 2.5 lb / 10 lb case

70-FC6



10" Long Frank
4 franks per lb.
(20 per pack)

Approx. 40 pcs per case
/ 2.5 lb / 10 lb case

70-FB410



**Hot
Beef & Veal Sausage**

Approx. 80 pcs per case
/ 2.5 lb / 10 lb case

70-BVSH



**Sweet
Beef & Veal Sausage**

Approx. 80 pcs per case
/ 2.5 lb / 10 lb case

70-BVSS



Mon Cuisine®



Linguini

12 per case / 10 oz ea.
/ 7.5 lb case

MONLG



Salisbury Steak

12 per case / 10 oz ea.
/ 7.5 lb case

MONSSG



Chicken Oriental

12 per case / 10 oz ea.
/ 7.5 lb case

MONCOG



Chicken Mediterranean

12 per case / 10 oz ea.
/ 7.5 lb case

MONCMG



Beef Stuffed Cabbage

12 per case / 10 oz ea.
/ 7.5 lb case

MONCAB



CHINESE



Hop Kee Steak

12 per case / 10 oz ea.
/ 7.5 lb case

MONCHS



Sesame Chicken

12 per case / 10 oz ea.
/ 7.5 lb case

MONCS



Sweet & Sour Chicken

12 per case / 10 oz ea.
/ 7.5 lb case

MONCSS



Lemon Chicken

12 per case / 10 oz ea.
/ 7.5 lb case

MONCL



16 OZ.



Roast Turkey

6 per case / 16 oz ea.
/ 6 lb case

MONRTG



Roast Chicken Breast

6 per case / 16 oz ea.
/ 6 lb case

MONRCB



Beef Goulash

6 per case / 16 oz ea.
/ 6 lb case

MONBGG



Ribeye

6 per case / 16 oz ea.
/ 6 lb case

MONRG





Braised Veal

6 per case / 16 oz ea.
/ 6 lb case

MONBVG



Fillet of Salmon

6 per case / 16 oz ea.
/ 6 lb case

MONFSG



Fillet of Tilapia

6 per case / 16 oz ea.
/ 6 lb case

MONFTG



VEGETARIAN



**Vegetarian
Grilled Steak**

6 per case / 10 oz ea.
/ 3.75 lb case

MONVGS



**Vegetarian
Stuffed Cabbage**

6 per case / 10 oz ea.
/ 3.75 lb case

MONVSC



**Vegan Breaded
Chicken Nuggets**

6 per case / 10 oz ea.
/ 3.75 lb case

MONIQN



**Vegan Breaded
Chicken Patties**

6 per case / 9 oz ea.
/ 3.375 lb case

MONIQP



**Vegan Moroccan
Chicken**

6 per case / 10 oz ea.
/ 3.75 lb case

MONVMC



**Vegetarian
Spaghetti & Meatballs**

6 per case / 10 oz ea.
/ 3.75 lb case

MONVSM





**Vegetarian Breaded
Chicken Style Cutlet**

6 per case / 10 oz ea.
/ 3.75 lb case

MONVCC



**Vegetarian Veal
Style Schnitzel**

6 per case / 10 oz ea.
/ 3.75 lb case

MONVVS



**Vegetarian
Italian Stuffed
Shell Pasta**

6 per case / 10 oz ea.
/ 3.75 lb case

MONVSSH



**Vegetarian
Salisbury Steak**

6 per case / 10 oz ea.
/ 3.75 lb case

MONVSS



**Eggplant
Moussaka**

6 per case / 10 oz ea.
/ 3.75 lb case

MONVM



**Vegan
Ground Beef**

6 per case / 10 oz ea.
/ 3.75 lb case

MONVBC



**DAIRY
CHOLOV YISROEL**



Cheese Blintzes

6 per case / 10 oz ea.
/ 3.75 lb case

MONDB



Eggplant Parmigiana

6 per case / 10 oz ea.
/ 3.75 lb case

MONDE



Cheese Lasagna

6 per case / 10 oz ea.
/ 3.75 lb case

MONDL



Baked Ziti

6 per case / 10 oz ea.
/ 3.75 lb case

MONDZ





Beef Pot Pie

12 per case / 10 oz ea.
/ 7.5 lb case

05-BPPR



Chicken Pot Pie

12 per case / 10 oz ea.
/ 7.5 lb case

05-CPPR



Turkey Pot Pie

12 per case / 10 oz ea.
/ 7.5 lb case

05-TPPR



Vegan Chicken Style Pot Pie

12 per case / 10 oz ea.
/ 7.5 lb case

05-VCPPR



RETAIL HORS D'OEUVRES



Mini Egg Rolls

12 per case / 10 oz ea.
/ 7.5 lb case

MONERL



Cocktail Beef Franks

12 per case / 5.5 oz ea.
/ 4.125 lb case

MONCF



Mini Potato Puffs

12 per case / 7.2 oz ea.
/ 5.4 lb case

MONPP



RETAIL KUGELS



Potato Kugel

6 per case / 18 oz ea.
/ 6.75 lb case

05-NPKR



Sweet Noodle Kugel

6 per case / 20 oz ea.
/ 7.5 lb case

05-NNKR



Jerusalem Kugel

6 per case / 20 oz ea.
/ 7.5 lb case

05-NYKR



Broccoli Kugel

6 per case / 20 oz ea.
/ 7.5 lb case

05-NBKR



Apple Noodle Kugel

6 per case / 20 oz ea.
/ 7.5 lb case

05-NAKR



**Meat & Potato Kugel
Yapchik**

6 per case / 20 oz ea.
/ 7.5 lb case

01-PKPYR



Meal Mart

The brand you trust.

IF WE MADE
THEM ANY
BIGGER YOUR
TASTEBUDS
WOULD
EXPLODE!



DELICIOUS BITE SIZE BURGERS AVAILABLE IN

5 BOLD FLAVORS

TOMATO BASIL • MUSHROOM • ORIGINAL • BBQ

FEATURED
Barbecue
FLAVOR

FAMILY PACKS



**Family Pack
Sliced Brisket**

6 per case / 32 oz ea.
/ 12 lb case

05-CPRBFP



**Family Pack
Matzoh Balls**

6 per case / 26 oz ea.
/ 9.75 lb case

05-MABFP



**Family Pack
Beef Meat Balls**

6 per case / 33 oz ea.
/ 12.375 lb case

05-BMBFP



**Family Pack
Beef Stuffed Cabbage**

6 per case / 39 oz ea.
/ 14/625 lb case

05-SCFP



**Family Pack
Falafel Balls**

6 per case / 22 oz ea.
/ 8.25 lb case

05-VFBFP





**Family Pack
Egg Rolls Parve**

6 per case / 25 oz ea.
/ 9.375 lb case

05-ERLFP



**Family Pack
Breaded Chicken/
Turkey Nuggets**

6 per case / 24 oz ea.
/ 9 lb case

05-CTNFP



**Family Pack
Breaded Chicken/
Turkey Cutlets**

6 per case / 21 oz ea.
/ 7.875 lb case

05-CTCFP



**Family Pack
Buffalo Wings**

6 per case / 24 oz ea.
/ 9 lb case

05-BWFP





FROZEN IQF PACKED IN PRINTED BAGS



Chicken Breast Nuggets

6 per case / 26 oz ea.
/ 9.75 lb case

05-CN26



0 51328 71167 3



Boneless Buffalo Style Wings

6 per case / 26 oz ea.
/ 9.75 lb case

05-BBWM



0 51328 70580 1



Chicken Breast Nuggets

6 per case / 64 oz ea.
/ 24 lb case

03-NCNC



0 51328 99539 4



Buffalo Wings Mild

6 per case / 32 oz ea.
/ 12 lb case

05-BWM



0 51328 99736 7



Buffalo Wings Hot

6 per case / 32 oz ea.
/ 12 lb case

05-BWH



0 51328 99737 4



Chick'n Zingers

6 per case / 32 oz ea.
/ 12 lb case

05- HPCW



0 51328 70781 2



Honey BBQ Chicken Wings

6 per case / 32 oz ea.
/ 12 lb case

05-HBBQW



0 51328 70945 8



Beef Meatballs

6 per case / 26 oz ea.
/ 9.75 lb case

05-BMB26



Breaded Chicken Tenders

6 per case / 26 oz ea.
/ 9.75 lb case

05-CTB26



Grilled Chicken Cutlets

6 per case / 32 oz ea.
/ 12 lb case

05-GCC



Shlishkes

6 per case / 32 oz ea.
/ 12 lb case

05-SHL



Matzoh Balls

6 per case / 32 oz ea.
/ 12 lb case

05-MAB



Falafel Balls

6 per case / 26 oz ea.
/ 9.75 lb case

05-VFB26



All New
Kids Nuggets!



Chick'n Turkey Shapes Nuggets

6 per case / 32 oz ea.
/ 12 lb case

05-KFSN



Chick'n Pop-Ems

6 per case / 32 oz ea.
/ 12 lb case

05-KCP



Chicken Fries

6 per case / 32 oz ea.
/ 12 lb case

05-MMCF



Spicy Chicken Fries

6 per case / 32 oz ea.
/ 12 lb case

05-MMCF5



SPECIALTIES



Beef & Veal Sausage Hot

12 per case / 12 oz ea.
/ 9 lb case

05-BVSH



Beef & Veal Sausage Sweet

12 per case / 12 oz ea.
/ 9 lb case

05-BVSS



No Nitrite Beef Franks

12 per case / 12 oz ea.
/ 9 lb case

50-MMNON



GLUTEN FREE



Gluten Free Chick'n Turkey Shapes Nuggets

6 per case / 32 oz ea.
/ 12 lb case

22-PKFSN



Gluten Free Beef Meatballs

6 per case / 26 oz ea.
/ 9.75 lb case

21-PBMB26



Gluten Free Mild Buffalo Wings

6 per case / 32 oz ea.
/ 12 lb case

22-PBWM



Gluten Free Chicken Tenders

6 per case / 26 oz ea.
/ 9.75 lb case

22-PCTB26



Meal Mart

The brand you trust.

YOU SHOULDN'T HAVE TO EXCHANGE GOOD FOR FREE.

NOW OFFERING DELICIOUS
GLUTEN FREE
— OPTIONS —





**Gefilte Fish
Raw Frozen**

12 per case / 20 oz ea.
/ 15 lb case

05-GEF12



**Gefilte Fish
Large Jar**

12 per case / 24 oz ea.
/ 18 lb case

07-GEF



**Gefilte Fish
Jar**

12 per case / 14 oz ea.
/ 10.5 lb case

07-PFS



**Horseradish (Chrein)
Jar, Fresh**

12 per case / 16 oz ea.
/ 12 lb case

02-CHR



**Mrs. Schrieber
Chopped Liver**

12 per case / 12 oz ea.
/ 9 lb case

05-RRCLSCH



**Meal Mart
Chopped Liver**

12 per case / 12 oz ea.
/ 9 lb case

05-RRCLMM



**Sautéed
Chicken Liver**

12 per case / 7 oz ea.
/ 5.25 lb case

05-RRCLS



**Chopped
Chicken Liver**

12 per case / 7 oz ea.
/ 5.25 lb case

05-RRCLL



Kishke

12 per case / 16 oz ea.
/ 12 lb case

05-KISRE



Pastrami Kishke

12 per case / 16 oz ea.
/ 12 lb case

05-KISREP



Gani Parve Kishke

12 per case / 16 oz ea.
/ 12 lb case

05-PKGAN



Amazing Meals

READY-TO-EAT



Chicken Meat Balls

with Rice & Garden Vegetables

12 per case / 12 oz ea.
/ 9 lb case

05-RRCMR



Beef & Lamb Kebab

with Quinoa & Pimento

12 per case / 12 oz ea.
/ 9 lb case

05-RRBLK



Stuffed Chicken

with Rice & Mushrooms

12 per case / 12 oz ea.
/ 9 lb case

05-RRSCR



Turkey Shawarma

with Chick Peas

12 per case / 12 oz ea.
/ 9 lb case

05-RTSC



Chicken Chow Mein

12 per case / 12 oz ea.
/ 9 lb case

05-RRCCM





Pepper Steak

12 per case / 12 oz ea.
/ 9 lb case

05-RRPS



Gefilte Fish

in Gelled Broth

12 per case / 12 oz ea.
/ 9 lb case

05-RRGF



Beef Rib Steak

12 per case / 12 oz ea.
/ 9 lb case

05-RRBS



Parve Cholent

with Rice & Garden Vegetables

12 per case / 12 oz ea.
/ 9 lb case

05-RRPC



Stuffed Cabbage

12 per case / 12 oz ea.
/ 9 lb case

05-RRSC



Fillet Of Salmon

with Rice & Garden Vegetables

12 per case / 12 oz ea.
/ 9 lb case

05-RRFS



Roasted Chicken

with Rice & Garden Vegetables

12 per case / 12 oz ea.
/ 9 lb case

05-RRBC



Chicken Soup

12 per case / 12 oz ea.
/ 9 lb case

05-RRCS



Cholent with Beef

12 per case / 12 oz ea.
/ 9 lb case

05-RRCB



Eggplant Parmesan

with Rice & Garden Vegetables

12 per case / 12 oz ea.
/ 9 lb case

05-RREP





Parve Ravioli
with Rice & Garden Vegetables

12 per case / 12 oz ea.
/ 9 lb case

05-RRPCR



Parve Variety Kugels

12 per case / 12 oz ea.
/ 9 lb case

05-RRVK



Parve Baked Ziti
with Rice & Garden Vegetables

12 per case / 12 oz ea.
/ 9 lb case

05-RRBZ



White & Gefilte Fish
in Jelled Broth

12 per case / 12 oz ea.
/ 9 lb case

05-RRWGF



Spaghetti & Meatballs

12 per case / 12 oz ea. /
9 lb case

05-RRSM



Beef Goulash

12 per case / 12 oz ea. /
9 lb case

05-RRBG



Meatloaf & Mashed Potatoes

12 per case / 12 oz ea.
/ 9 lb case

05-RRMP



Retort Lamb Head

12 per case / 7.5 oz ea.
/ 5.62 lb case

05-RRLH



PASSOVER

Amazing Meals

READY-TO-EAT



Bone-in Chicken

with Diced Potatoes

12 per case / 12 oz ea. / 9 lb. case

22-RRCP



0 51328 70069 1



Beef Goulash

with Carrots & Broccoli

12 per case / 12 oz ea. / 9 lb. case

22-RRBG



0 51328 70070 7



Salmon

with Diced Potatoes & Carrots

12 per case / 12 oz ea. / 9 lb. case

22-RRPS



0 51328 70074 5



Stuffed Cabbage

with Beef in Tomato Sauce

12 per case / 12 oz ea. / 9 lb. case

22-RRSC



0 51328 70072 1



Chicken Soup

with Matzo Balls

12 per case / 12 oz ea. / 9 lb. case

22-RRSCM



0 51328 70073 8



Gefilte Fish

in Jelled Broth

12 per case / 12 oz ea. / 9 lb. case

22-RRGF



0 51328 70071 4

ALL
PROCESSI



Food on the fly.

When good food is always just 2 minutes away, delays and cancellations become a lot more manageable.



CLUB PACKS



Beef Goulash

8 per case / 2.5 lb ea.
/ 20 lb case

05-CBGPC



Gefilte Fish

8 per case / 2.5 lb ea.
/ 20 lb case

05-CGF



Beef Moussaka

10 per case / 2.5 lb ea.
/ 25 lb case

05-CBM



Pot Roast

with Potatoes & Carrots

8 per case / 2.5 lb ea.
/ 20 lb case

05-CPRPC



Chicken Cacciatore

12 per case / 1.5 lb ea.
/ 18 lb case

05-CCBC



Chopped Chicken Liver

16 per case / 2.7 oz
ea. / 14 lb case

05-CRRCL



Chicken Soup

with Matzo Balls

8 per case / 2.5 lb ea.
/ 20 lb case

05-CCS2.5



Stuffed Cabbage

8 per case / 2.5 lb ea.
/ 20 lb case

05-CSC2.5





Mini Stuffed Chicken

with Basmati Rice & Dried Fruit

12 per case / 1.875 lb ea.
/ 22.5 lb case

05-CSCBDM



Spare Ribs in BBQ Sauce

8 per case / 2.5 lb ea.
/ 20 lb case

71-CBR



Mini Stuffed Chicken

with Rice & Mushrooms

12 per case / 1.875 lb ea.
/ 22.5 lb case

05-CSCRMM



Ribeye

8 per case / 2 lb ea. /
16 lb case

71-CFCRR



Turkey Stuffed Peppers

8 per case / 2.5 lb ea.
/ 20 lb case

05-CTSP



Brisket

12 per case / 1.8 lb ea.
/ 21.6 lb case

71-CRBR



Falafel Balls (Vegan)

8 per case / 2 lb ea. /
16 lb case

05-CVFB



Nuggets (Frozen)

9 per case / 4 lb ea. /
36 lb case

05-CCN9





Salami Chub

12 per case / 12 oz ea.
/ 9 lb case

50-MSAL12



Plate Pastrami Chunk

12 per case / approx. 1 lb ea.
/ 12 lb case

71-PASTNS



Bologna Chub

12 per case / 12 oz ea.
/ 9 lb case

50-MBOL12



Turkey Roll Chub

12 per case / approx. 1 lb ea.
/ 12 lb case

41-JTR1



Smoked Turkey Drumsticks

12 per case / approx. 1 lb ea.
/ 12 lb case

71-STL



Retail Chicken Liver

12 per case / 8 oz ea.
/ 6 lb case

05-BCL



Salami

6 per case / 2 lb ea.
/ 12 lb case

50-BYSAL2

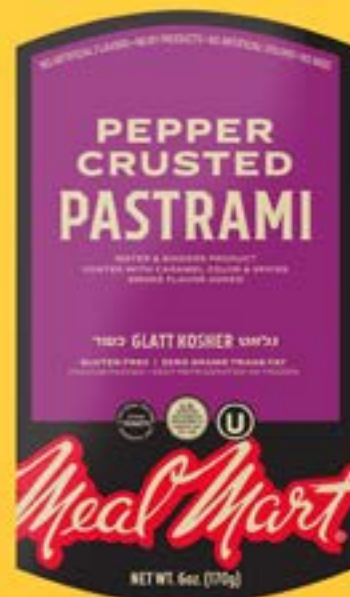




FOR THOSE WHO TAKE
THEIR
SANDWICHES
SERIOUSLY

THE COUNTER TO YOUR USUAL OVER THE COUNTER.

If you wrote the rules, you can break them,
and that's exactly what we did with our new line of new and
improved deli 2.0. It's deli done differently, and it's here to put
an end to boring sandwiches and the same old same old.



RETAIL SLICED DELI



Corned Beef

12 per case / 16 oz ea.
/ 12 lb case

50-MCBS16



Pastrami

12 per case / 16 oz ea.
/ 12 lb case

50-MPAS16



Smoked Turkey Breast

12 per case / 16 oz ea.
/ 12 lb case

50-STBS16



Smoked Turkey Breast

12 per case / 6 oz ea.
/ 4.5 lb case

50-MSTB6



Turkey Roll

12 per case / 6 oz ea.
/ 4.5 lb case

50-MTRO6



Cooked Corned Beef

12 per case / 6 oz ea.
/ 4.5 lb case

50-MCBS6



Sliced Pastrami

12 per case / 6 oz ea.
/ 4.5 lb case

50-MPAS6



Smoked Beef Fry

12 per case / 4 oz ea.
/ 3 lb case

50-BFR



Mexican Smoked Turkey Breast

12 per case / 6 oz ea.
/ 4.5 lb case

50-GMSTB6



Smoked Turkey Breast

12 per case / 6 oz ea.
/ 4.5 lb case

50-GSTB6





Turkey Pastrami

12 per case / 6 oz ea.
/ 4.5 lb case

50-MTPA6



Classic Pastrami

12 per case / 6 oz ea.
/ 4.5 lb case

50-MPASR4



Classic Salami

12 per case / 6 oz ea.
/ 4.5 lb case

50-MCSAL4



Beef Salami

12 per case / 6 oz ea.
/ 4.5 lb case

50-MSAL6



Beef Bologna

12 per case / 6 oz ea.
/ 4.5 lb case

50-MBAL6



Romanian Turkey Pastrami

12 per case / 6 oz ea.
/ 4.5 lb case

50-RTP6



Old Fashioned Smoked Turkey Breast

12 per case / 6 oz ea.
/ 4.5 lb case

50-SBTOF6



Honey Smoked Turkey Breast

12 per case / 6 oz ea.
/ 4.5 lb case

50-GHSTB6



Cooked Corned Beef

12 per case / 6 oz ea.
/ 4.5 lb case

50-BYCBS6



Sliced Pastrami

12 per case / 6 oz ea.
/ 4.5 lb case

50-BYPAS6





The Deli Collection

12 per case / 15 oz ea. / 11.25 lb case

50-DVP



The Turkey Collection

12 per case / 15 oz ea. / 11.25 lb case

50-TVP



Honey Mustard Pastrami

12 per case / 6 oz ea. / 4.5 lb case

50-MPAS6HM



Hot & Spicy Pastrami

12 per case / 6 oz ea. / 4.5 lb case

50-MPAS6HS



Pepper Crusted Pastrami

12 per case / 6 oz ea. / 4.5 lb case

50-MPAS6PC



Roast Beef

12 per case / 6 oz ea. / 4.5 lb case

50-MPRB6



Sweet n' Tangy Corned Beef

12 per case / 6 oz ea. / 4.5 lb case

50-MCBS6ST



MINI TURKEY CHUBS



Smoked Turkey Breast

12 per case / 15 oz ea.
/ 11.25 lb case

50-GSTBM



0 51328 71567 1



Romanian Pepper Crusted Turkey Breast

12 per case / 15 oz ea.
/ 11.25 lb case

50-GRTBM



0 51328 71569 5



Mexican Smoked Turkey Breast

12 per case / 15 oz ea.
/ 11.25 lb case

50-GMSTBM



0 51328 71571 8



Honey Mustard Smoked Turkey Breast

12 per case / 15 oz ea.
/ 11.25 lb case

50-GHSTBM



0 51328 71570 1



Hickory Turkey Breast

12 per case / 15 oz ea.
/ 11.25 lb case

50-GHISTBM



0 51328 71568 8



Cooked Turkey Breast

12 per case / 15 oz ea.
/ 11.25 lb case

50-GCTBM



0 51328 71566 4



Beef Franks

12 per case / 12 oz ea.
/ 9 lb case

10-NVP12N



Hot & Spicy Franks

12 per case / 12 oz ea.
/ 9 lb case

10-NVP12H



Turkey Franks

12 per case / 12 oz ea.
/ 9 lb case

50-MTF12N



**Reduced Fat
Beef Franks**

12 per case / 12 oz ea.
/ 9 lb case

10-NRFF12N



Beef Franks

12 per case / 16 oz ea.
/ 12 lb case

70-FB8/40



Classic Franks

12 per case / 16 oz ea.
/ 12 lb case

10-NCF16



Chicken Franks

12 per case / 12 oz ea.
/ 9 lb case

50-MCF1N



Beef Franks

12 per case / 12 oz ea.
/ 9 lb case

10-BYNVP12



**Beef Cocktail
Franks**

12 per case / 12 oz ea.
/ 9 lb case

10-BYBCF





PREMIUM RETAIL FRANKS & SAUSAGES



Israeli Shwarma Chicken Sausage

12 per case / 12 oz ea.
/ 9 lb case

10-CSS



0 51328 71487 2



American Steak Sausage

12 per case / 12 oz ea.
/ 9 lb case

10-BSS



0 51328 71472 8



Hot Italian Sausage

12 per case / 12 oz ea.
/ 9 lb case

10-HIBS



0 51328 70893 2



Mexican Chorizo Sausage

12 per case / 12 oz ea.
/ 9 lb case

10-MCBS



0 51328 70895 6



Polish Sausage

12 per case / 12 oz ea.
/ 9 lb case

10-PBS



0 51328 70914 4



Bavarian Knackwurst Sausage

12 per case / 12 oz ea.
/ 9 lb case

10-BKBS



0 51328 71351 6



Sweet Italian Sausage

12 per case / 12 oz ea.
/ 9 lb case

10-SIBS



0 51328 71523 7



Beef Kielbasa

12 per case / 1 lb ea.
/ 12 lb case

50-MKOL1N



0 51328 10108 5

FROZEN RAW BEEF & POULTRY



Teriyaki Beef Sliders

12 per case / 13 oz ea.
/ 9.75 lb case

05-TBP2



Original Beef Sliders

12 per case / 13 oz ea.
/ 9.75 lb case

05-BPS2



Barbeque Beef Sliders

12 per case / 13 oz ea.
/ 9.75 lb case

05-BPSBQ





Beef Patties

6 per case / 48 oz pack
/ 18 lb case

05-BPFP



Turkey Patties

6 per case / 48 oz pack
/ 18 lb case

05-TPFP



Beef Patties

12 per case / 11 oz pack
/ 8.25 lb case

05-NBPR



Minute Steak

12 per case / approx. 12 oz
/ 9 lb case

91-NMSR



Beef Stew

12 per case / 16 oz pack
/ 12 lb case

05-NBSR



Ribeye Steak

12 per case / 10 oz pack
/ 7.5 lb case

91-NRER



Ground Beef

12 per case / 16 oz pack
/ 12 lb case

05-NGBR



**CASE
READY
MEAT
TRAY PACK**



Plate Short Ribs

12 per case
/ approx. 1 lb ea.

91-65507



6 per case
/ approx. 1 lb ea.

91-65507-6



Beef For Stew

12 per case
/ approx. 1 lb ea.

91-65511



6 per case
/ approx. 1 lb ea.

91-65511-6



Minute Steak

12 per case
/ approx. 1 lb ea.

91-65502



6 per case
/ approx. 1 lb ea.

91-65502-6



Pepper Steak

12 per case
/ approx. 1 lb ea.

91-65503



6 per case
/ approx. 1 lb ea.

91-65503-6



Chuck Tender Steak

12 per case
/ approx. 1 lb ea.

91-65506



6 per case
/ approx. 1 lb ea.

91-65506-6



Chuck Steak

12 per case
/ approx. 1 lb ea.

91-65505



6 per case
/ approx. 1 lb ea.

91-65505-6



Short Rib Boneless

12 per case
/ approx. 1 lb ea.

91-65512



0 51328 65512 0

6 per case
/ approx. 1 lb ea.

91-65512-6



0 51328 71546 6



Brisket Flat Cut

6 per case
/ approx. 2 lb ea.

91-65500



0 51328 65500 7



Marrow Bones

12 per case
/ approx. 1 lb ea.

91-65521



0 51328 70736 2

6 per case
/ approx. 1 lb ea.

91-65521-6



Beef Sliders

12 per case .
/ approx. 1 lb ea.

91-65540



0 51328 70845 1



Chuck Patties

12 per case
/ approx. 1 lb ea.

91-65526



0 51328 65526 7

6 per case
/ approx. 1 lb ea.

91-65526-6



Chuck Roast

6 per case
/ approx. 2 lb ea.

91-65504



0 51328 65504 5



Ground Beef 80%

12 per case
/ approx. 1 lb ea.

91-65528



0 51328 71426 1

6 per case
/ approx. 1 lb ea.

91-65528-6



0 51328 71547 3



Finger Meat

12 per case
/ approx. 1 lb ea.

91-65529



0 51328 70954 0



Ground Chuck

12 per case.
approx. 1 lb ea.

91-65525



0 51328 65525 0

6 per case
/ approx. 1 lb ea.

91-65525-6



Beef Shoulder Steak

12 per case
/ approx. 1 lb ea.

91-65520



0 51328 70696 9



Shoulder London Broil

8 per case
/ approx. 2 lb ea.

91-65501



Cheek Meat

12 per case
/ approx. 1 lb ea.

91-65523



Skirt Steak

12 per case
/ approx. 1 lb ea.

91-65533



Ribeye Steak 3/4" - 1"

12 per case
/ approx. 1 lb ea.

91-65508



6 per case
/ approx. 1 lb ea.

91-65508-6

Prime Ribeye Steak 3/4" - 1"

12 per case
/ approx. 1 lb ea.

91-65508p



Ribeye Steak Bone In

12 per case
/ approx. 1 lb ea.

91-65509



6 per case
/ approx. 1 lb ea.

91-65509-6



Prime Ribeye Steak Bone In

12 per case
/ approx. 1 lb ea.

91-65509p



Meal Mart®

The brand you trust.



★ STEAKHOUSE QUALITY ★

EXTENDED SHELF LIFE • BEEF, VEAL & LAMB



VEAL



Veal Stew

12 per case
/ approx. 1 lb ea.

91-65515



Veal Shoulder Roast

8 per case
/ approx. 2 lb ea.

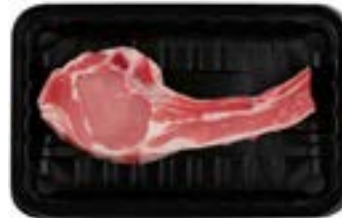
91-65514



Veal Neck Roast

8 per case
/ approx. 2 lb ea.

91-65513



Veal Rib Chops

12 per case
/ approx. 1 lb ea.

91-65552





Lamb Shoulder Roast Netted

8 per case
/ approx. 2 lb ea.

91-65516



Lamb Chuck Bone In

8 per case
/ approx. 2 lb ea.

91-65517



Lamb Stew Bone In

12 per case
/ approx. 1 lb ea.

91-65518



Lamb Stew Boneless

12 per case
/ approx. 1 lb ea.

91-65519



Lamb Shoulder Chops

12 per case
/ approx. 1 lb ea.

91-65551



6 per case
/ approx. 1 lb ea.

91-65551-6



LAMB

CASE READY MEAT ROLL STOCK



Brisket 1st Cut

6 per case
/ approx. 2 lb ea.
91-65500RS



0 51328 71266 3

Grass Fed / 6 per case
/ approx. 2 lb ea.
91-65500GF



0 51328 71402 5



Shoulder London Broil

8 per case
/ approx. 2 lb ea.
91-65501RS



0 51328 71235 9

Grass Fed / 8 per case
/ approx. 2 lb ea.
91-65501GF



0 51328 71403 2



Minute Steak

12 per case
/ approx. 1 lb ea.
91-65502RS



0 51328 71236 6

Grass Fed / 12 per case
/ approx. 1 lb ea.
91-65502GF



0 51328 71404 9



Pepper Steak

12 per case
/ approx. 1 lb ea.
91-65503RS



0 51328 71237 3

Grass Fed / 12 per case
/ approx. 1 lb ea.
91-65503GF



0 51328 71405 6



Chuck Roast

6 per case
/ approx. 2 lb ea.
91-65504RS



0 51328 71238 0

Grass Fed / 6 per case
/ approx. 2 lb ea.
91-65504GF



0 51328 71406 3



Chuck Eye Steak

12 per case
/ approx. 1 lb ea.
91-65505RS



0 51328 71239 7

Grass Fed / 12 per case
/ approx. 1 lb ea.
91-65505GF



0 51328 71407 0



Plate Short Ribs

12 per case
/ approx. 1 lb ea.
91-65507RS



0 51328 71241 0

Grass Fed / 12 per case
/ approx. 1 lb ea.
91-65507GF



5 13287 14094 4



Beef For Stew

12 per case
/ approx. 1 lb ea.

91-65511RS



Grass Fed / 12 per case
/ approx. 1 lb ea.

91-65511GF



Ground Beef 80%

12 per case
/ approx. 1 lb ea.

91-65528RS



Beef Shoulder Steak

12 per case
/ approx. 1 lb ea.

91-65520RS



Grass Fed / 12 per case
/ approx. 1 lb ea.

91-65520GF



Marrow Bones

12 per case
/ approx. 1 lb ea.

91-65521RS



Chuck Tender Steak

12 per case
/ approx. 1 lb ea.

91-65506RS



Grass Fed / 12 per case
/ approx. 1 lb ea.

91-65506GF



Chuck Patties

12 per case
/ approx. 1 lb ea.

91-65526RS



Finger Meat

12 per case
/ approx. 1 lb ea.

91-65529RS



Grass Fed / 12 per case
/ approx. 1 lb ea.

91-65529GF



Ribeye Steak Bone In

12 per case
/ approx. 1 lb ea.

91-65509RS



Short Rib Boneless

12 per case
/ approx. 1 lb ea.

91-65512RS



Grass Fed / 12 per case
/ approx. 1 lb ea.

91-65512GF



Ribeye Steak 3/4" - 1"

12 per case
/ approx. 1 lb ea.

91-65508RS



Ground Chuck

Roll Stock / 12 per case
/ approx. 1 lb ea.

91-65525RS



Grass Fed / 12 per case
/ approx. 1 lb ea.

91-65525GF





★ ★ ★ AMERICAN ★ ★ ★
GRASS FED
ANGUS BEEF

NO HORMONES ◦ NO ANTIBIOTICS ◦ RICH FLAVOR
RICHER IN OMEGA-3'S ◦ EXCELLENT SOURCE OF CLA

————— CERTIFIED BY THE AMERICAN GRASSFED ASSOCIATION —————

RAISED BETTER
TASTES BETTER™

————— EST.  1946 —————

No grain, just grass, that's what separates this meat from the herd and gives it that rich, natural, more flavorful taste.

LAMB



Lamb Shoulder Roast Netted

8 per case
/ approx. 2 lb ea.

91-65516RS



Lamb Chuck Bone In

8 per case
/ approx. 2 lb ea.

91-65517RS



Lamb Stew Bone In

12 per case
approx. 1 lb ea.

91-65518RS



Lamb Stew Boneless

12 per case
/ approx. 1 lb ea.

91-65519RS



Ground Lamb Roll Stock

12 per case
/ approx. 1 lb ea.

91-65593RS



Lamb Shoulder Chops

12 per case
/ approx. 1 lb ea.

91-65551RS



VEAL



Veal Stew

12 per case
/ approx. 1 lb ea.

91-65515RS



Veal Neck Roast

8 per case
/ approx. 2 lb ea.

91-65513RS



Veal Shoulder Roast

8 per case
/ approx. 2 lb ea.

91-65514RS



Veal Rib Chops

12 per case
/ approx. 1 lb ea.

91-65552RS



Ground Veal

12 per case
/ approx. 1 lb ea.

91-65592RS



CRYOVAC



1st Cut Brisket

6 per case
/ approx. 4 lb ea.

91-BOBH1/2



0 51328 70649 5



Corned Beef (1st Cut; Pickled)

6 per case
/ approx. 4 lb ea.

91-CBIPH1/2



0 51328 70848 2



Chuck Eye

6 per case
/ approx. 4 lb ea.

91-CHEH1/2



0 51328 70727 0



Deckel (Pickled)

6 per case
/ 4 lb ea.

91-DEPKL6



0 51328 99948 4



Pickled Tongue

6 per case
/ approx. 3.5 lb ea.

91-PBTR



0 51328 91020 5



Top Of Rib Large

6 per case
/ 4 lb ea.

91-TOPLH1/2



0 51328 99878 4



Lamb Roast (Roll)

6 per case
/ approx. 4 lb ea.

93-LRL1/2



0 51328 71067 6



Veal Neck Roast

6 per case
/ approx. 4 lb ea.

92-VNNR1/2



Shoulder Roast

6 per case
/ approx. 4 lb ea.

91-SBH1/2



0 51328 71470 4



Pickled Chicken Dark Roast

6 per case
/ approx. 4 lb ea.

99-CHDNP



Pickled Turkey Breast

6 per case
/ approx. 4 lb ea.

99-TBBNP



Pickled Turkey Dark Roast

6 per case
/ approx. 4 lb ea.

99-TDBNP



Pickled 2nd Cut Brisket

20 pcs / approx. 50 lb case

91-BOB2P



Pickled Corned Beef (Packer)

1 per case / approx. 13 lb case

91-CB



Pickled Corned Beef (1st Cut)

8 pcs / approx. 50 lb case

91-CBIP



Pickled Shoulder Roast (Netted)

5 pcs / approx. 50 lb case

91-SBPP



Pickled Tongue (2 Pack)

1 per case / approx. 7 lb case

91-TONP



Pickled Chuck Calachel

15 pcs / approx. 50 lb case

91-CCPKL



Pickled Chuck Eye

5 pcs / approx. 50 lb case

91-CHEP



Pickled French Roast

8 pcs / approx. 50 lb case

91-FRP



Pickled Minute Roast

8 pcs / approx. 50 lb case

91-MRP



Pickled Top Of Rib

50 lb case

91-TRP



Pickled Veal Neck Roast

50 lb case

92-VNP



Pickled Veal Tongue

15 lb case

92-VTP





BRANDED FOR QUALITY

ESTD **A** 1946

BEEF | VEAL | LAMB | POULTRY | PROVISIONS

MeatMart

Mon Cuisine

Schreiber

Amazing Meals
READY-TO-EAT

PLATTERED™